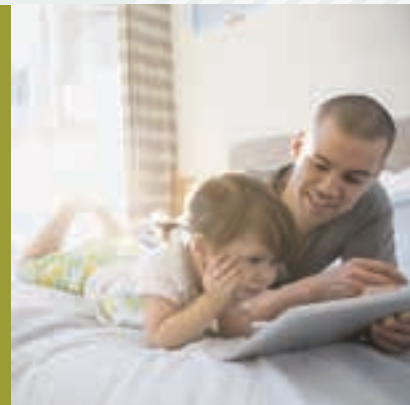




La Riviera
APARTMENTS

LIVE IN STYLE





ABOUT US

Where you live reflects who you are, your personality and your unique sense of style. At Riviera, we offer you a choice of possibilities to suit your needs, whether you are starting out with your first home or investing for your future. We design more than just houses and apartments. We design homes with you in mind. We create communities and neighbourhoods with everything you need to fully embrace life.

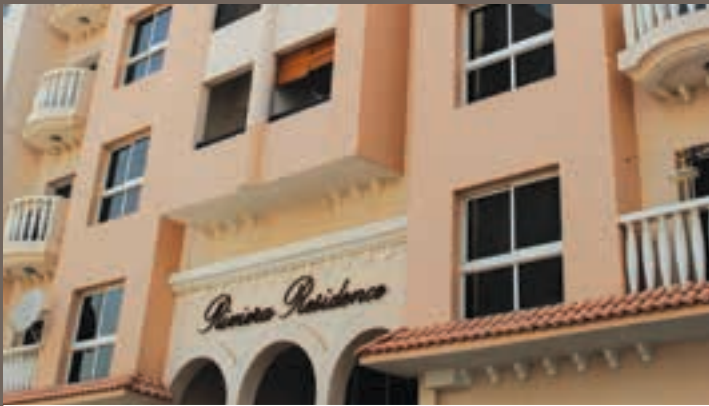
La Riviera Apartments are stylish and affordable. They can be yours.

969 UNITS DELIVERED



La Riviera
TOWER

185 units. Completed 2005



Riviera
RESIDENCE

176 units. Completed 2009

Riviera
LAKEVIEW APARTMENTS

221 units. Completed 2007



La Riviera
ESTATES

26 units. Completed 2011
Mediterranean Villas



Riviera
DREAMS

176 units. Completed 2008



La Riviera
ESTATES

185 units. Completed 2014
Côte d'Azur Apartments

INTRODUCING A NEW STANDARD OF LIVING

Designed to inspire a peaceful and uncomplicated lifestyle, La Riviera Apartments is a 22-storey residential building with stylish 1 and 2-bedroom apartments offering welcoming living spaces, where you can relax and unwind in an oasis of peace and comfort.



AN INVITING ESCAPE

A residence where every aspect has been carefully considered to create a refuge from the pressures of modern urban living and encourage a more relaxed outlook on life. Every home within La Riviera Apartments provides the perfect place to spend time with family, entertain friends or simply sit back and watch the world go by.

FROM EVERYDAY LIFE



WELCOME TO A HOME THAT MAKES AN INSTANT IMPRESSION

The transition from stress to tranquillity begins the moment you step into the inviting space of the lobby. With elegant décor, this is a place you'll want to spend time in, not simply pass through.



INSPIRING LUXURY

Riviera Retreat maintains the La Riviera tradition of providing outstanding leisure and relaxation facilities that have been designed to enhance life and encourage a philosophy of stress-free living.

DESIGNED TO SUIT YOUR LIFESTYLE



RIVIERA RETREAT

EVERYTHING YOU NEED FOR RELAXED LIVING



RIVIERA RETREAT RECEPTION

The elegant, light and airy reception area has been designed to create a natural flow from indoors to outside and welcome you to a wonderful place to relax, unwind and feel the strains of everyday city life evaporate.



RIVIERA RETREAT LOUNGE

The Lounge offers a large, comfortable space for parties and gatherings, ensuring everything you and your guests need for any occasion is just moments from your apartment.

RIVIERA RETREAT

EVERYTHING YOU NEED FOR RELAXED LIVING



GYM
To give you the opportunity to live as healthy a lifestyle as possible, La Riviera Apartments houses a fully equipped gym.



EXPERIENCE SHOWER
Wash away the toxins of city living in a special shower that provides multi-sensory experiences, from soft tropical rain to invigorating ice rain.



SMART STEAM ROOM
The unique, expansive steam room offers a spacious relaxing area to detoxify your body and let the stresses of the world drift away.

RIVIERA RETREAT

EVERYTHING YOU NEED FOR RELAXED LIVING



POOL AND JACUZZI

Re-energise yourself with a refreshing swim in the large temperature-controlled pool, or take it easy in the outdoor Jacuzzi to soothe and stimulate your whole body.



CHILDREN'S AQUATIC PLAY AREA

Having fun as a family is an important part of children's development, so we've taken the needs of families into consideration with a dedicated pool designed just for kids.

RIVIERA RETREAT

EVERYTHING YOU NEED FOR RELAXED LIVING



BBQ ZONE

Create mouth-watering meals as you savour the sizzle and smells of barbecued food in the specially built area created for safe, al fresco cooking.



LIVE IN STYLE

Your home should be a reflection of your lifestyle. The enticing living spaces in La Riviera Apartments are a personal retreat where you can escape and enjoy time with your family, as well as an elegant dwelling that showcases your style and a place that you are proud to invite your friends.

RELAX IN COMFORT



THE APARTMENTS

Designed to reflect your taste and style, each typical floor has seven spacious 1-bedroom “St Tropez” apartments and two 2-bedroom “Nice” apartments. Both the 1-bedroom and 2-bedroom apartments are available in a variety of sizes and configurations.

Furthermore, with our commitment to exceptional craftsmanship, you can be assured that every feature is guaranteed to be finished to the highest standard.



LIVING ROOM

TYPICAL FLOOR 3 TO 16



ST TROPEZ
(ONE BEDROOM)

NICE
(TWO BEDROOMS)

THE APARTMENTS



BEDROOM



KITCHEN



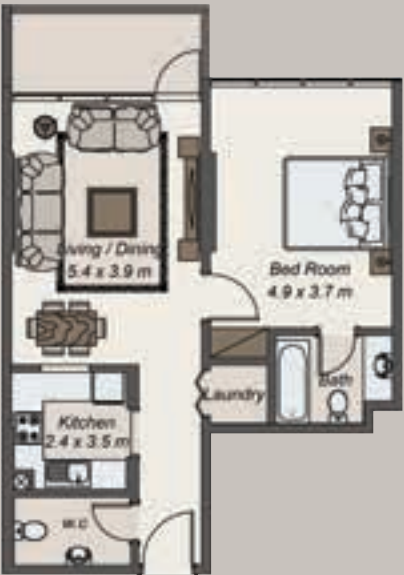
BATHROOM



ST TROPEZ

(ONE BEDROOM)

APARTMENT 1:	SQ.M	SQ.FT
SUITE	67.43	725.81
BALCONY	7.18	77.28
TOTAL	74.61	803.09



APARTMENT 4:	SQ.M	SQ.FT
SUITE	66.28	713.43
BALCONY	3.68	39.61
TOTAL	69.96	753.04



APARTMENT 3:	SQ.M	SQ.FT
SUITE	62.77	675.65
BALCONY	4.91	52.85
TOTAL	67.68	728.5



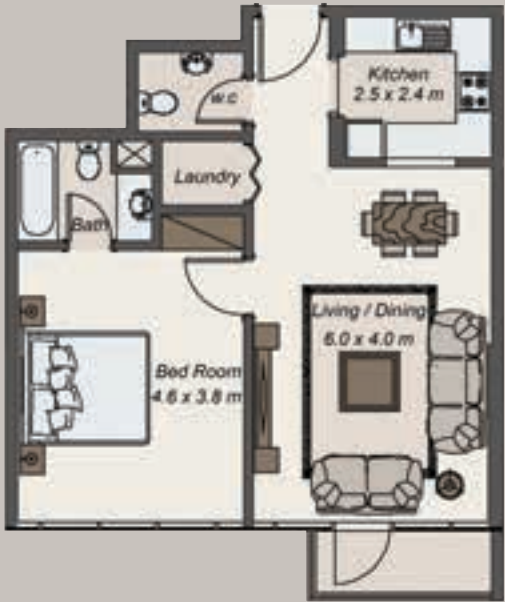
APARTMENT 5:	SQ.M	SQ.FT
SUITE	61.32	660.04
BALCONY	8.01	86.22
TOTAL	69.33	746.26



* SUITE & THE BALCONY AREA MAY VARY FROM FLOOR TO FLOOR.

ST TROPEZ
(ONE BEDROOM)

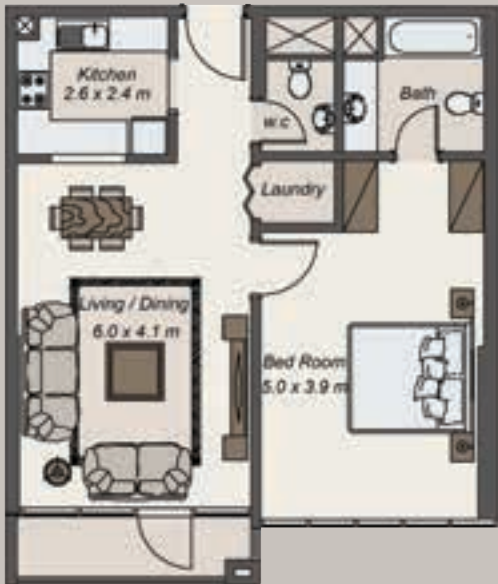
APARTMENT 6:	SQ.M	SQ.FT
SUITE	66.50	715.80
BALCONY	3.67	39.50
TOTAL	70.17	755.3



APARTMENT 9:	SQ.M	SQ.FT
SUITE	65.93	709.66
BALCONY	7.18	77.28
TOTAL	73.11	786.94

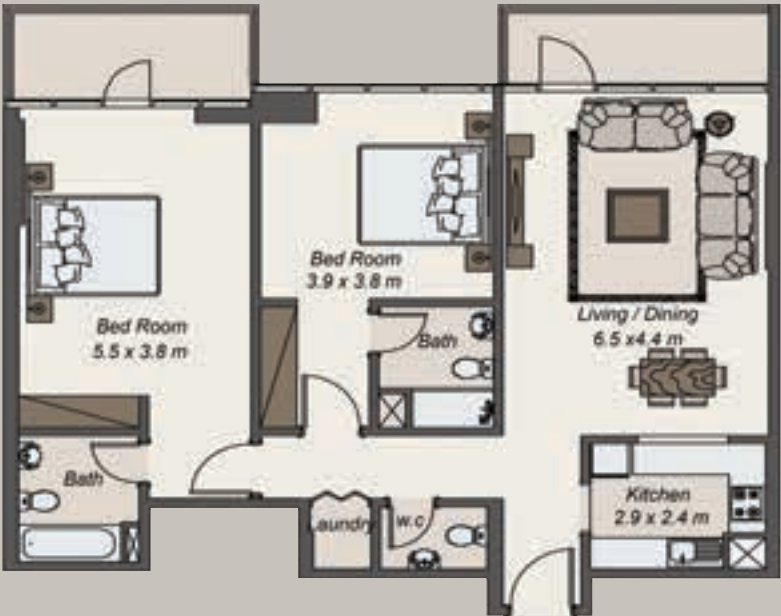


APARTMENT 7:	SQ.M	SQ.FT
SUITE	72.30	778.23
BALCONY	4.97	53.50
TOTAL	77.27	831.73

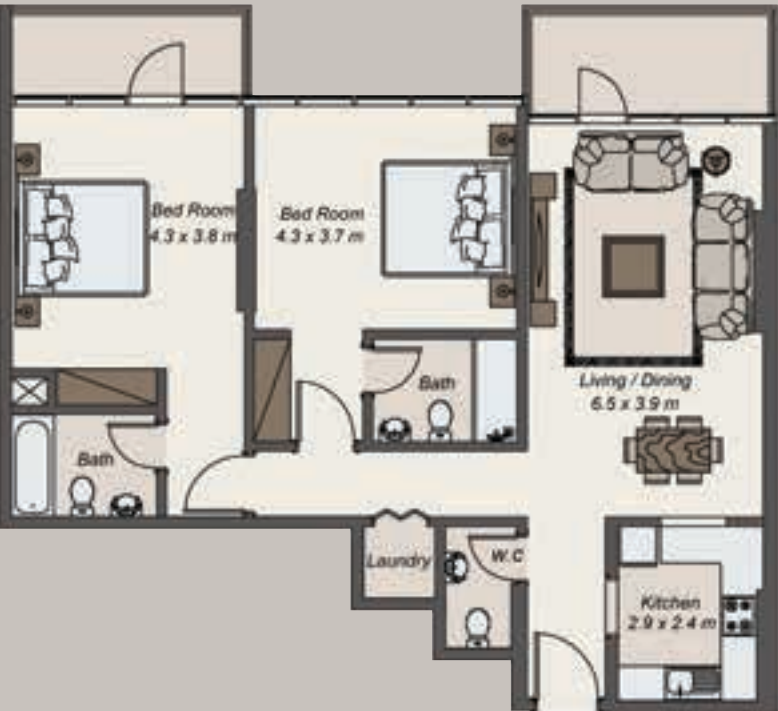


NICE
(TWO BEDROOMS)

APARTMENT 2:	SQ.M	SQ.FT
SUITE	111.96	1,205.13
BALCONY	13.78	148.33
TOTAL	125.74	1,353.46



APARTMENT 8:	SQ.M	SQ.FT
SUITE	104.62	1,126.12
BALCONY	13.07	140.68
TOTAL	117.69	1,266.8



* SUITE & THE BALCONY AREA MAY VARY FROM FLOOR TO FLOOR.

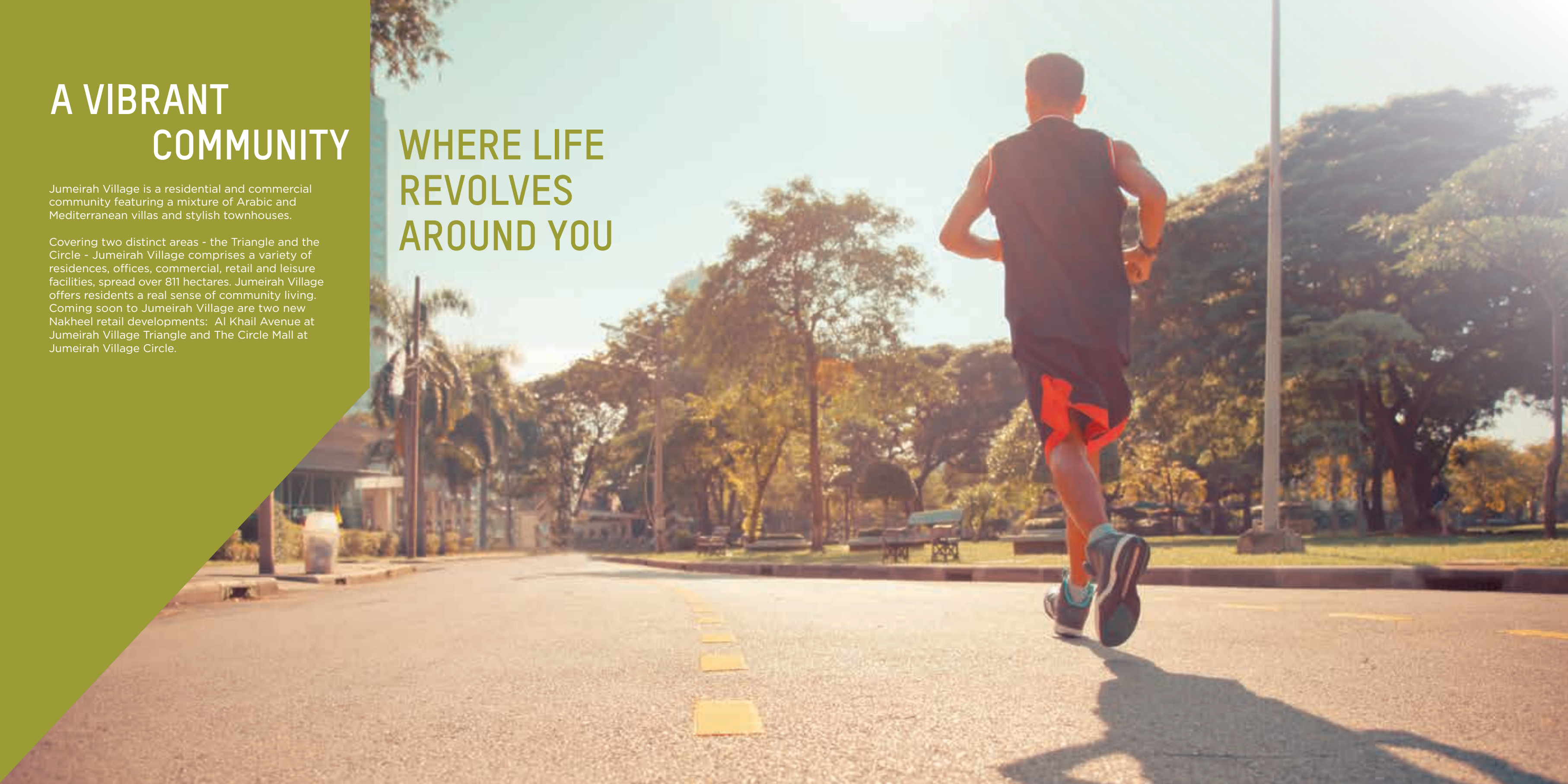
* SUITE & THE BALCONY AREA MAY VARY FROM FLOOR TO FLOOR.

A VIBRANT COMMUNITY

Jumeirah Village is a residential and commercial community featuring a mixture of Arabic and Mediterranean villas and stylish townhouses.

Covering two distinct areas - the Triangle and the Circle - Jumeirah Village comprises a variety of residences, offices, commercial, retail and leisure facilities, spread over 811 hectares. Jumeirah Village offers residents a real sense of community living. Coming soon to Jumeirah Village are two new Nakheel retail developments: Al Khail Avenue at Jumeirah Village Triangle and The Circle Mall at Jumeirah Village Circle.

WHERE LIFE REVOLVES AROUND YOU



THIS IS LIVING, THIS IS YOUR COMMUNITY

A self-contained community, Jumeirah Village Circle has all the everyday conveniences you require, in close proximity to your door, including a medical centre, supermarkets, laundries and coffee shops.

The Circle Mall at Jumeirah Village Circle, covering one million sq ft, will have 200 shops, an anchor supermarket, two department stores, a multi-screen cinema and a variety of dining outlets, including a food court. Strategically located between Sheikh Mohammed Bin Zayed Road, Al Khail Road and Hessa Street, The Circle Mall will serve hundreds of thousands of people living in Jumeirah Village and surrounding areas, and act as a new leisure destination for residents and tourists across the rest of Dubai. The mall is due to open in 2017.

WHAT’S IN YOUR NEIGHBOURHOOD?

-  SCHOOL
-  SHOPPING CENTRE
-  MEDICAL FACILITY
-  DIRECT ACCESS TO MAIN HIGHWAY
-  CONVENIENCE STORE

ME’AISEM CITY CENTRE



*All distances are approximate. Addresses are indicative and used for marketing purposes.

STRATEGICALLY LOCATED WITHIN DUBAI

Jumeirah Village Circle is perfectly located, putting you at the heart of everything Dubai has to offer. Situated just minutes from a number of schools, hospitals and other facilities, the community is a short drive from the city's international airports and business districts, as well as Dubai's pristine beaches and many exciting leisure attractions, such as the new Motiongate, Legoland Dubai and Bollywood theme parks, which are just 30 minutes drive.



*All distances are approximate. Addresses are indicative and used for marketing purpose.

OUR PARTNER



Founded in 1975, Bel-Yoahah is one of the UAE’s oldest consulting engineering and architectural firms working in the Middle East. With their impressive record of successfully completed projects, Bel-Yoahah enjoys the reputation of completing work on time and is proud to state that all commercial properties developed under their consultancy have 100% occupancy, as recorded recently, even after 15 to 20 years of being built.

DISCLAIMER

Architect and Developer reserve the right to alter the specifications and facilities. This brochure is purely conceptual and not a legal offering. The Developer reserves the right to amend / alter the area, layout, elevation specifications and amenities mentioned in this brochure. Elevation, photographs/images used in this brochure are purely artistic in nature and tend to change without prior notice unless explicitly mentioned. The units are offered without furniture and fixtures.

*Where you live reflects who you are, your personality and your unique sense of style.
At Riviera, we offer you a choice of possibilities to suit your needs whether you are starting
out with your first home or investing for your future.*

*We design more than just houses and apartments. We design homes with you in mind.
We create communities and neighbourhoods with everything you need to fully embrace life.*

La Riviera Apartments are stylish and affordable. They can be yours.

A PROJECT BY

B&M

HOUSE OF RIVIERA DEVELOPMENTS

rivieragroup.ae

P.O.Box: 54380, Dubai
United Arab Emirates

Tel: + 971 4 2996968

Fax: + 9714 2996965

Email: rpд@bmriviera.com

DEVELOPED BY

Riviera

PROPERTIES DEVELOPMENT

larivieraapartments.ae